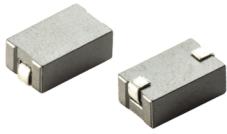


SMD Power Bead—SMB302332~562585 Series

SMB Series



Features

For RoHS & HF & REACH
For DC Power Line, EMI Suppressor
Higher current.
SMD Design.

Applications

Computer products. (Mother board , Hard Disk , TV card..Etc.)
Communication products. (like :PAGER , Cordless Phone..Etc.)
Modem ,OA products , power supplier..Etc.
Countermeasures for complying with CE ,FCC,VDE or VCCI radiated emissions.

Product Identification

SMB XXXXXX TL – XXX - X
For example:SMB302540TL-K5B-L

General Specifications

Test frequency.....25MHz&100MHz
Parameters Test Temp..... 25℃
Operation Temp.....-25℃ to +125℃
(Including temperature Rise)
Storage Temp.....0~40℃
Storage Humidity.....70% RH
Resistance to Soldering Heat.....260℃ for 10 sec
Temperature Rise.....40℃ Typ. at Rated Current

Shape And Dimensions In mm

Electrical Schematic & PAD Layout

Fig 1

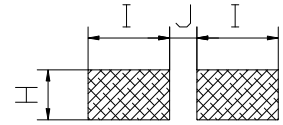
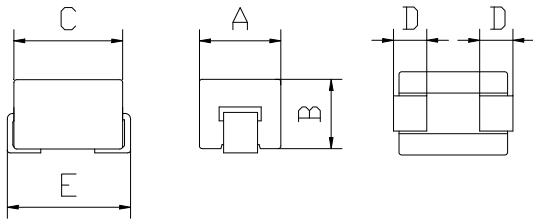


Fig 2

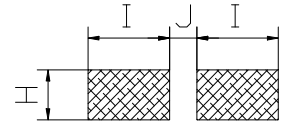
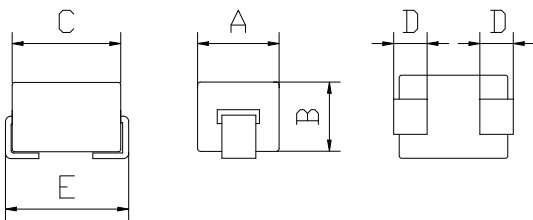
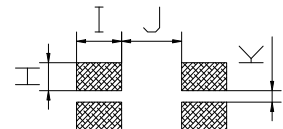
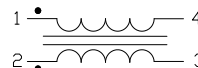
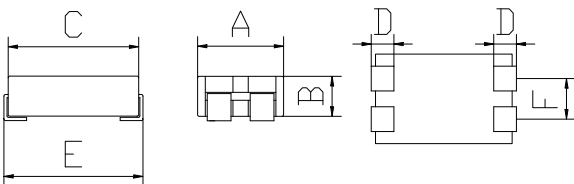


Fig 3



Standard Specifications

Part/Number	A	B	C	D	E	F	H	I	J	K	Shape
	±0.3	±0.4	±0.4	Ref	Max	±0.5	Ref	Ref	Ref	Ref	
SMB302332TL-K5B-L1	2.90	2.30	3.00	0.80	3.60		1.8	2.0	1.0		Fig.1
SMB302340TL-K5B-L1	3.00	2.30	4.00	1.50	5.10		1.8	3.0	1.0		Fig.1
SMB302540TL-K5B-L	3.00	2.55	4.00	1.50	5.10		1.8	3.0	1.0		Fig.2
SMB302585TL-A78-L	3.00	2.55	8.50	1.50	9.50		3.0	3.0	6.4		Fig.2
SMB302585TL-78-L1	3.00	2.55	8.50	1.50	9.50		3.0	3.0	6.4		Fig.1
SMB473078TL-A78-L	4.75	3.00	7.80	1.50	8.60		3.0	3.0	4.8		Fig.2
SMB562545TL-K5B-L	5.60	2.50	4.50	1.50	5.10	2.54	1.8	3.0	1.0	0.74	Fig.3
SMB562585TL-A-L	5.60	2.50	8.50	1.50	9.30	2.54	1.8	3.0	4.0	0.74	Fig.3

Standard Specifications

Part/Number	Impedance (Ω) Ref		DCR (mΩ) Max	Rated Current (A) Max	Shape
	25MHz	100MHz			
SMB302332TL-K5B-L1	20	32	3.00	12.0	Fig.1
SMB302340TL-K5B-L1	28	45	4.00	9.00	Fig.1
SMB302540TL-K5B-L	30	49	6.00	9.00	Fig.2
SMB302585TL-A78-L	55	101	9.00	6.00	Fig.2
SMB302585TL-78-L1	58	100	9.00	13.0	Fig.1
SMB473078TL-A78-L	69	97	9.00	6.00	Fig.2
SMB562545TL-K5B-L	23	35	10.0	6.00	Fig.3
SMB562585TL-A-L	32	51	10.0	6.00	Fig.3

*All the data listed in this catalogue are for reference only, JENG SHI reserves the right to alter or revise the specifications without prior notification.

*Beyond the above specification also can meet the special requirements. Need detailed content Please to the website query or contact us.

