

SCHF Series

Features

Excellent Q factor and SRF characteristics
 small size of 100505/201209 is suitable for small portable devices
 supports operating frequency up to 6GHz with nominal inductance values form 1.0nH to 220nH

Applications

RF resonance and impedance matching circuit
 RF and wireless communication
 Information technology, computers, telecommunications, radar detectors, automotive electronics, cellular phones, pagers, PDAs, keyless remote systems
 L-C filter configurations

General Specifications

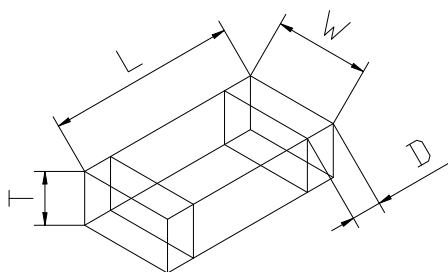
Test frequency..... 100MHz
 Test Voltage.....50mV
 Parameters Test Temp..... 25℃
 Operation Temp.....-55℃ to +125℃
 (Including temperature Rise)
 Storage Temp.....0~40℃
 Storage Humidity.....<70% RH
 Resistance to Soldering Heat.....260℃ for 10 sec
 Rated Current.....40℃ typ. at Irms



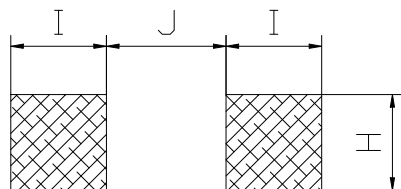
Product Identification

SCHFXXXXXTL - XXXX
 For example:SCHF100505TL-18NJ

Shape And Dimensions



PAD Layout



Dimensions In mm

TYPE	L	W	T	D	H	I	J
	Ref	Ref	Ref	Ref	Ref	Ref	Ref
100505 (0402)	1.00±0.15 (0.040±0.006)	0.50±0.15 (0.020±0.006)	0.50±0.15 (0.020±0.006)	0.25±0.10 (0.010±0.004)	0.40 (0.016)	0.50 (0.020)	0.40 (0.016)
160808 (0603)	1.60±0.20 (0.063±0.008)	0.80±0.20 (0.031±0.008)	0.80±0.20 (0.031±0.008)	0.30±0.20 (0.012±0.008)	0.60 (0.024)	1.30 (0.051)	0.80 (0.031)
201209 (0805)	2.00±0.20 (0.079±0.008)	1.20±0.20 (0.047±0.008)	0.90±0.20 (0.035±0.008)	0.50±0.30 (0.020±0.012)	1.00 (0.040)	1.40 (0.055)	1.20 (0.047)

Standard Specifications

Stamp	Inductance (nH) 100MHZ	Q (Min) 100MHZ	Q Frequency(MHZ)					DCR (Ω) Max	SRF(MHZ) Min	Rated current (mA) Max
			100	300	500	800	1000			
SCHF100505TL-1N0	1.0	7.0	8.0	20.0	26.0	34.0	38.0	0.17	6000	300
SCHF100505TL-1N2	1.2	7.0	8.0	20.0	26.0	34.0	38.0	0.17	6000	300
SCHF100505TL-1N5	1.5	7.0	8.0	20.0	26.0	34.0	38.0	0.18	6000	300
SCHF100505TL-1N8	1.8	7.0	8.0	18.0	24.0	30.0	35.0	0.19	6000	300
SCHF100505TL-2N2	2.2	7.0	8.0	17.0	24.0	29.0	35.0	0.21	6000	300
SCHF100505TL-2N7	2.7	7.0	8.0	17.0	23.0	29.0	34.0	0.22	5500	300
SCHF100505TL-3N3	3.3	7.0	8.0	17.0	23.0	28.0	34.0	0.25	5500	300
SCHF100505TL-3N9	3.9	7.0	8.0	17.0	23.0	28.0	33.0	0.25	5200	300
SCHF100505TL-4N7	4.7	7.0	8.0	17.0	23.0	28.0	33.0	0.30	4800	300
SCHF100505TL-5N6	5.6	7.0	8.0	17.0	22.0	28.0	33.0	0.30	4600	300
SCHF100505TL-6N8	6.8	7.0	8.0	17.0	22.0	27.0	33.0	0.37	4000	250
SCHF100505TL-8N2	8.2	7.0	10.0	16.0	22.0	28.0	32.0	0.45	3600	250
SCHF100505TL-10N	10.0	7.0	10.0	17.0	22.0	30.0	32.0	0.47	3200	250
SCHF100505TL-12N	12.0	8.0	11.0	17.0	24.0	31.0	34.0	0.55	2800	250
SCHF100505TL-15N	15.0	8.0	11.0	18.0	24.0	30.0	33.0	0.70	2500	250
SCHF100505TL-18N	18.0	8.0	11.0	18.0	24.0	30.0	32.0	0.70	2200	200
SCHF100505TL-22N	22.0	8.0	11.0	18.0	24.0	30.0	31.0	0.90	2000	200
SCHF100505TL-27N	27.0	8.0	11.0	18.0	23.0	27.0	29.0	1.00	1600	200
SCHF100505TL-33N	33.0	8.0	11.0	18.0	22.0	25.0	25.0	1.10	1300	200
SCHF100505TL-39N	39.0	8.0	11.0	18.0	22.0	24.0	23.0	1.30	1200	150
SCHF100505TL-47N	47.0	8.0	11.0	18.0	21.0	23.0	21.0	1.40	1000	150

Note: When ordering, please specify tolerance code. Tolerance: S=±0.3nH, D=±0.5nH, J=±5%, K=±10%, M=±20%

*All the data listed in this catalogue are for reference only, JENG SHI reserves the right to alter or revise the specifications without prior notification.

*Beyond the above specification also can meet the special requirements. Need detailed content Please to the website query or contact us.

Standard Specifications

Stamp	Inductance (nH) 100MHZ	Q (Min) 100MHZ	Q Frequency(MHZ)					DCR (Ω) Max	SRF(MHZ) Min	Rated current (mA) Max
			100	300	500	800	1000			
SCHF201209TL-1N5	1.5	8.0	10.0	23.0	46.0	54.0	85.0	0.10	6000	600
SCHF201209TL-1N8	1.8	8.0	13.0	24.0	46.0	55.0	85.0	0.10	6000	600
SCHF201209TL-2N2	2.2	8.0	13.0	25.0	46.0	53.0	85.0	0.10	6000	600
SCHF201209TL-2N7	2.7	8.0	13.0	25.0	42.0	45.0	76.0	0.10	6000	600
SCHF201209TL-3N3	3.3	8.0	15.0	28.0	48.0	52.0	85.0	0.13	6000	600
SCHF201209TL-3N9	3.9	8.0	15.0	28.0	49.0	55.0	85.0	0.15	5400	600
SCHF201209TL-4N7	4.7	8.0	15.0	28.0	48.0	53.0	85.0	0.20	4500	400
SCHF201209TL-5N6	5.6	8.0	16.0	30.0	44.0	45.0	78.0	0.23	4000	400
SCHF201209TL-6N8	6.8	8.0	16.0	30.0	40.0	45.0	69.0	0.25	3650	400
SCHF201209TL-8N2	8.2	8.0	16.0	28.0	42.0	45.0	69.0	0.28	3000	400
SCHF201209TL-10N	10.0	8.0	16.0	28.0	43.0	45.0	71.0	0.30	2500	300
SCHF201209TL-12N	12.0	8.0	16.0	28.0	43.0	45.0	50.0	0.35	2450	300
SCHF201209TL-15N	15.0	8.0	18.0	30.0	43.0	43.0	56.0	0.40	2000	300
SCHF201209TL-18N	18.0	8.0	18.0	26.0	40.0	42.0	59.0	0.45	1750	300
SCHF201209TL-22N	22.0	8.0	17.0	31.0	45.0	45.0	59.0	0.50	1700	300
SCHF201209TL-27N	27.0	8.0	17.0	31.0	45.0	45.0	54.0	0.55	1550	300
SCHF201209TL-33N	33.0	8.0	18.0	27.0	41.0	40.0	44.0	0.60	1350	300
SCHF201209TL-39N	39.0	8.0	19.0	31.0	42.0	31.0	20.0	0.70	1300	300
SCHF201209TL-47N	47.0	8.0	20.0	24.0	33.0	31.0	29.0	0.80	1200	300
SCHF201209TL-56N	56.0	8.0	21.0	34.0	43.0	35.0	25.0	0.80	1150	300
SCHF201209TL-68N	68.0	8.0	19.0	28.0	37.0	29.0		0.85	1000	300
SCHF201209TL-82N	82.0	8.0	19.0	29.0	30.0	27.0		0.90	850	300
SCHF201209TL-R10	100.0	8.0	13.0	27.0	36.0			1.00	600	300
SCHF201209TL-R12	120.0	8.0	19.0	27.0				1.20	500	300
SCHF201209TL-R15	150.0	8.0	19.0	27.0				1.50	500	300
SCHF201209TL-R18	180.0	8.0	19.0	25.0				1.80	400	300
SCHF201209TL-R22	220.0	8.0	19.0	22.0				1.80	350	300

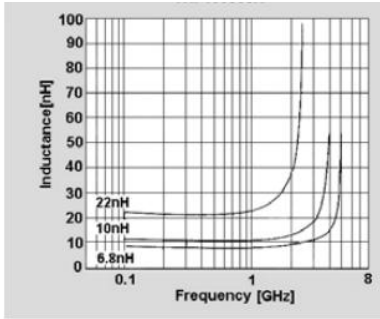
Note: When ordering, please specify tolerance code. Tolerance: S=±0.3nH, D=±0.5nH, J=±5%, K=±10%, M=±20%

*All the data listed in this catalogue are for reference only, JENG SHI reserves the right to alter or revise the specifications without prior notification.

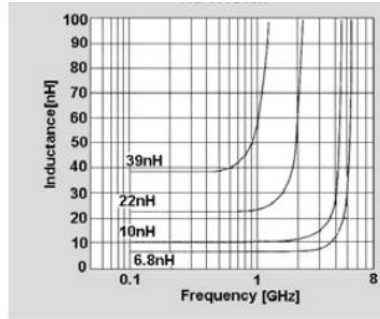
*Beyond the above specification also can meet the special requirements. Need detailed content Please to the website query or contact us.

Inductance VS Frequency

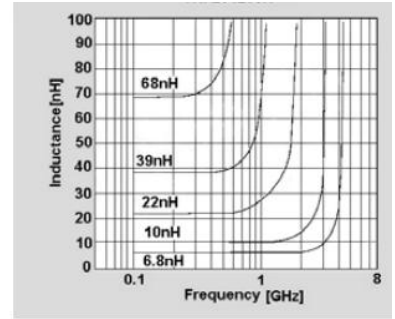
SCHF100505TL



SCHF160808TL

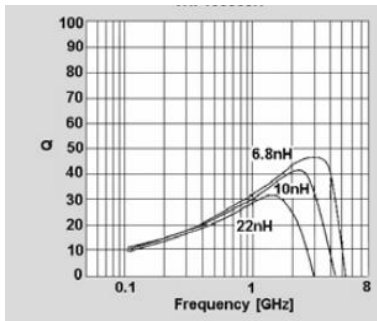


SCHF201209TL

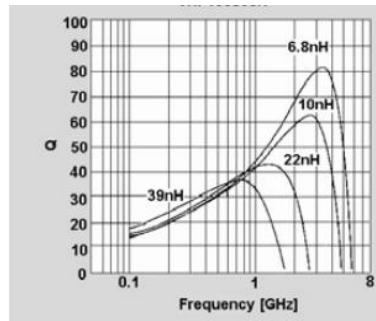


Q Value VS Frequency

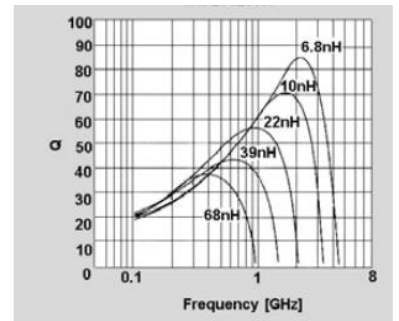
SCHF100505TL



SCHF160808TL

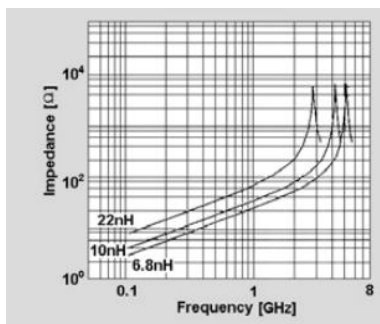


SCHF201209TL

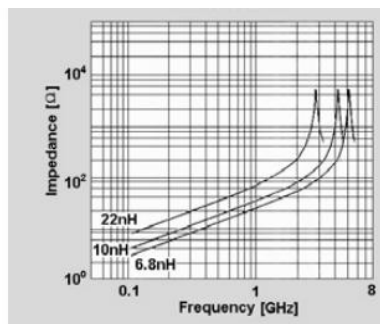


Impedance VS Frequency

SCHF100505TL



SCHF160808TL



SCHF201209TL

